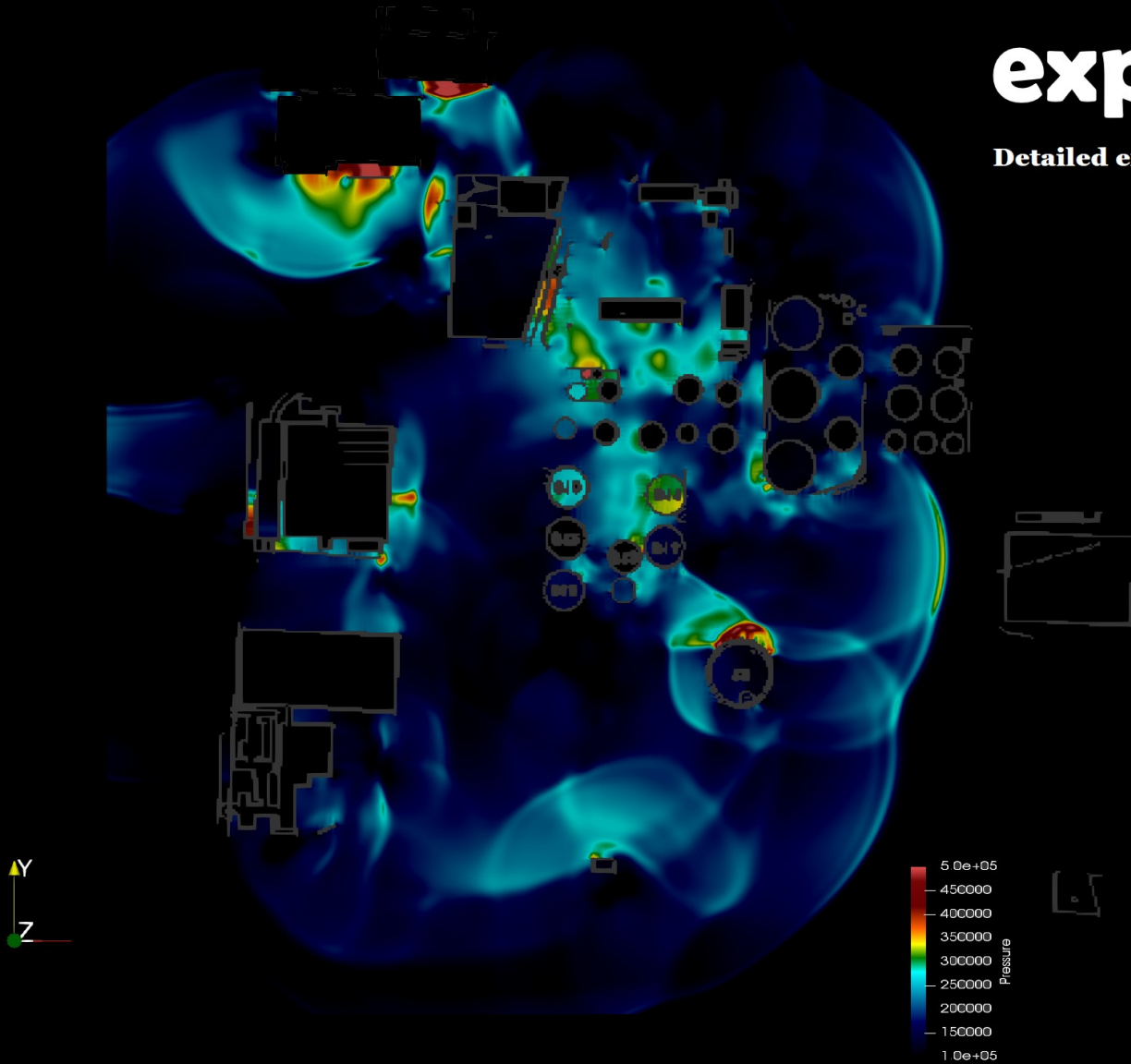


# exploCFD

Detailed explosion Consequence

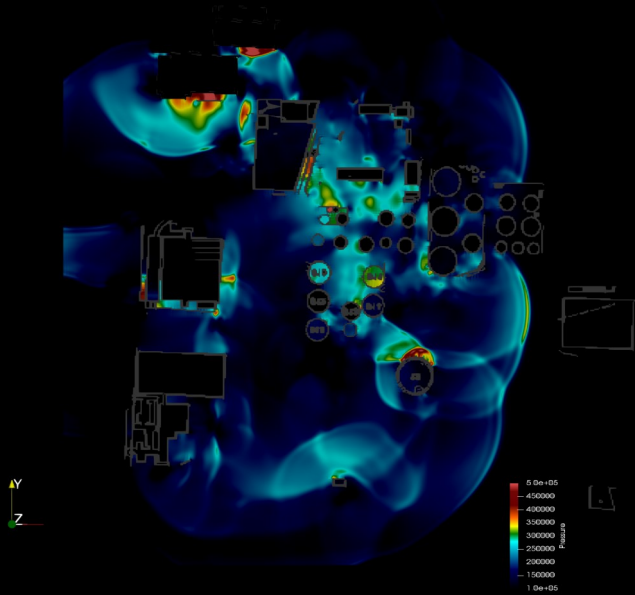


## exploCFD is User Friendly:

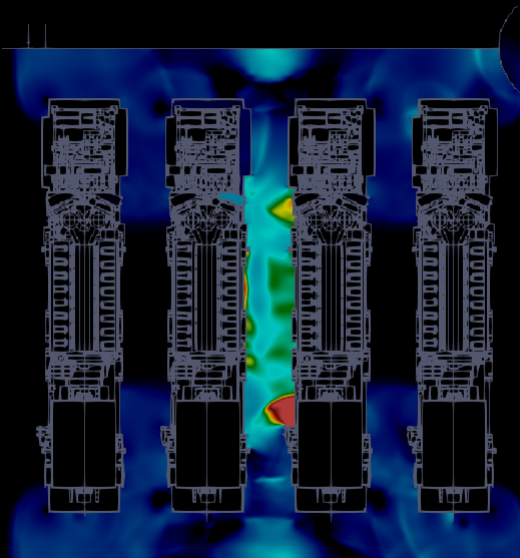
- Extensive modelling capabilities for hazard analysis
- Compatible with popular office word processing, spreadsheet and database applications
- Consistent Windows™ look-and-feel
- Online electronic help and dedicated helpdesk

## ADVANTAGES

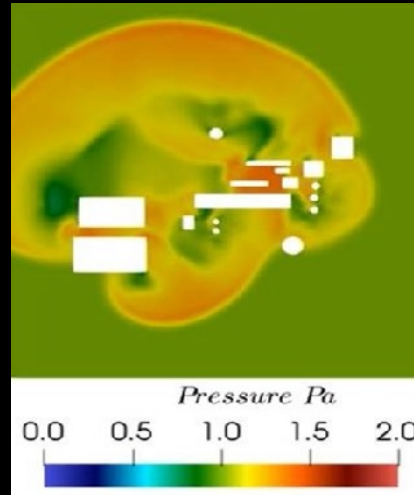
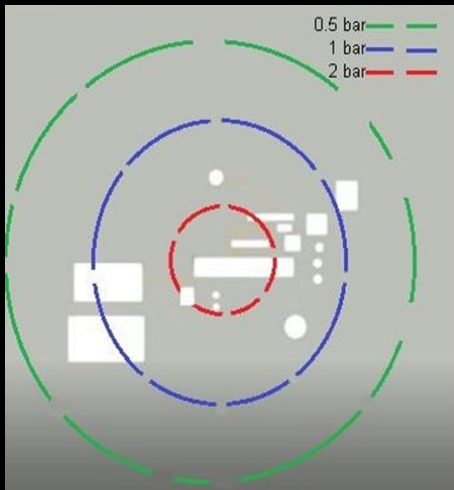
- Detailed information of overpressures far superior to 1-D circle-on-plot-plan methods
- Superior assistance in compliance with safety regulations.
- Enables more effective preparation for and response to explosion incidents by providing deeper understanding
- Constant software upgrades supported by real consultancy and explosion modelling experience
- Enables for real cost reduction in terms of losses and insurance compared with
- The most cost-effective way for ensuring safe design and safety driven modifications



**exploCFD** is used to analyse explosions which pose serious hazards to life, property, and the environment. The software shows the user the magnitude, and a detailed distribution of the overpressure in the event of an explosion. Consequences are better managed and reduced with more accurate, and more detailed pressure distribution on site. More detailed information means better intervention through plant design, plant modification, or by implementing mitigation



## QUESTION



**Which of the above overpressure distributions do you prefer base your decision on?**

Operators, consultants, and regulators prefer to know which buildings need strengthening, and where which buildings should be moved. Overestimate, and you are spending too much money, underestimate and it can end in disaster.

**Applications of exploCFD** is revolutionising blast modelling. It is used to calculate visualise overpressures and consequences from explosions.

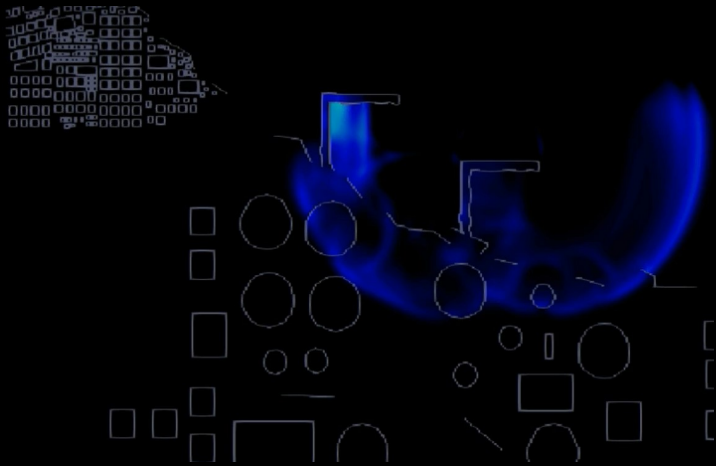
Applications of exploCFD include:

- Safety case preparation
- Plant layout
- Inventory planning and segmentation
- Accident investigations and safety management planning exploCFD
- Emergency response plan development
- Compliance with regulations
- Non-standard operations analysis

**exploCFD** is indispensable within

following industries:

- Petrochemical plants Chemical process plants
- Oil and Gas offshore and onshore
- Consultancy and Design Services
- Insurance Risk Assessors



Some companies that have trialled or used exploCFD in one or more of their projects include:

***Lloyds Register RPS Einblick Atkins Global BuroHappold Engineering RPS Worley ADNOC Gas Processing ADNOC Onshore ARAMCO Brunei Methanol and many more***

## Methodology and validation Papers exploCFD and SU2

- [1] M. Abdel-Jawad, P. Brady, Mihai Ermaliuc, Damian McGuckin Validating a Fast Hybrid Method for Modelling Explosions NAFEMS 2019 CANADA
- [2] Albring, T., M. Sagebaum, and N.R. Gauger, (2016) Efficient Aerodynamic Design using the Discrete Adjoint Method in SU2, in 17th AIAA/ISSMO Multidisciplinary Analysis and Optimization Conference, AIAA: Washington, D.C., U.S.A.
- [3] Ahrens J, Geveci B, Law C (2015) ParaView: An End-User Tool for Large Data Visualization LA-UR-03-1560 Los Alamos National Laboratory, ParaView., Kitware Inc: New York, NY, U.S.A.
- [4] BG Technology, Explosions in Full Scale Offshore Model Geometries, in Offshore Technology Reports. 2000, Health and Safety Executive: Merseyside, United Kingdom.
- [5] Economon, T.D., (2018), Simulation and Adjoint-based Design for Variable Density Incompressible Flows with Heat Transfer, in 2018 Multidisciplinary Analysis and Optimization Conference. AIAA: Atlanta, Georgia, U.S.A.
- [6] Economon, T.D., Dheevatsa Mudigere, Gaurav Bansal, Alexander Heinecke, Francisco Palacios, Jongsoo Park, Mikhail Smelyanskiy, Juan J. Alonso, Pradeep Dubey, (2016) , Performance optimizations for scalable implicit RANS calculations with SU2. Computers and Fluids, 2016. 129.
- [7] Economon, T.D., Francisco Palacios, Sean R. Copeland, Trent W. Lukaczyk, Juan J. Alonso (2016) SU2: An Open-Source Suite for Multiphysics Simulation and Design. AIAA Journal, 2016. 54(3): p. 828-846.
- [8] Eggen, J.B.M.M., (1998), GAME: development of guidance for the application of the multi-energy method., TNO Prins Maurits Laboratory: Rijswijk, Netherlands.
- [9] Evans, J.A., R. Exon, and D.M. Johnson, The Repeatability of Large Scale Explosion Experiments, in Offshore Technology Reports. 1999, Health and Safety Executive: Merseyside, United Kingdom.
- [10] Li, J., M. Abdel-jawad, and G. Ma, (2014), New correlation for vapor cloud explosion overpressure calculation at congested configurations. Journal of Loss Prevention in the Process Industries, (2014). 31: p. 16-25.
- [11] Pini M., S. Vitale, P. Colonna, G. Gori, A. Guardone , T. Economon , J.J. Alonso and F. Palacios, (2017), SU2: the Open-Source Software for Non-ideal Compressible Flows, in 1st International Seminar on Non-Ideal Compressible-Fluid Dynamics for Propulsion & Power. IOP Publishing: Vila Monastero, Varenna, Italy.
- [12] Accuracy improvement in evaluation of gas explosion overpressures in congestions with safety gaps G Ma, J Li, M Abdel-jawad - Journal of Loss Prevention in the Process Industries, 2014